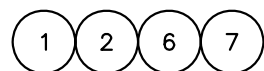


ESTIMATED TARE
 FRONT : 8000 Kg
 REAR : 11500 Kg
 TOTAL : 19500 Kg

TURNING RADIUS : 7400

PARTS LIST : PL-16-A-1-220

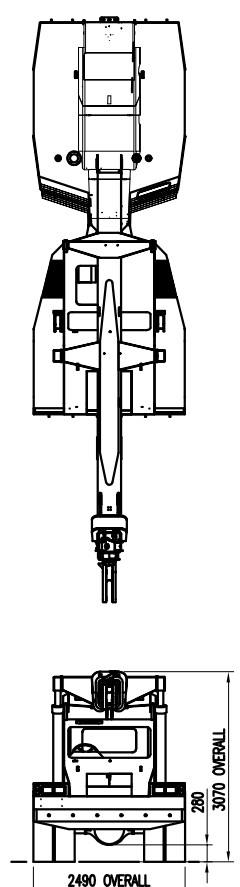
KITS NOT ILLUSTRATED



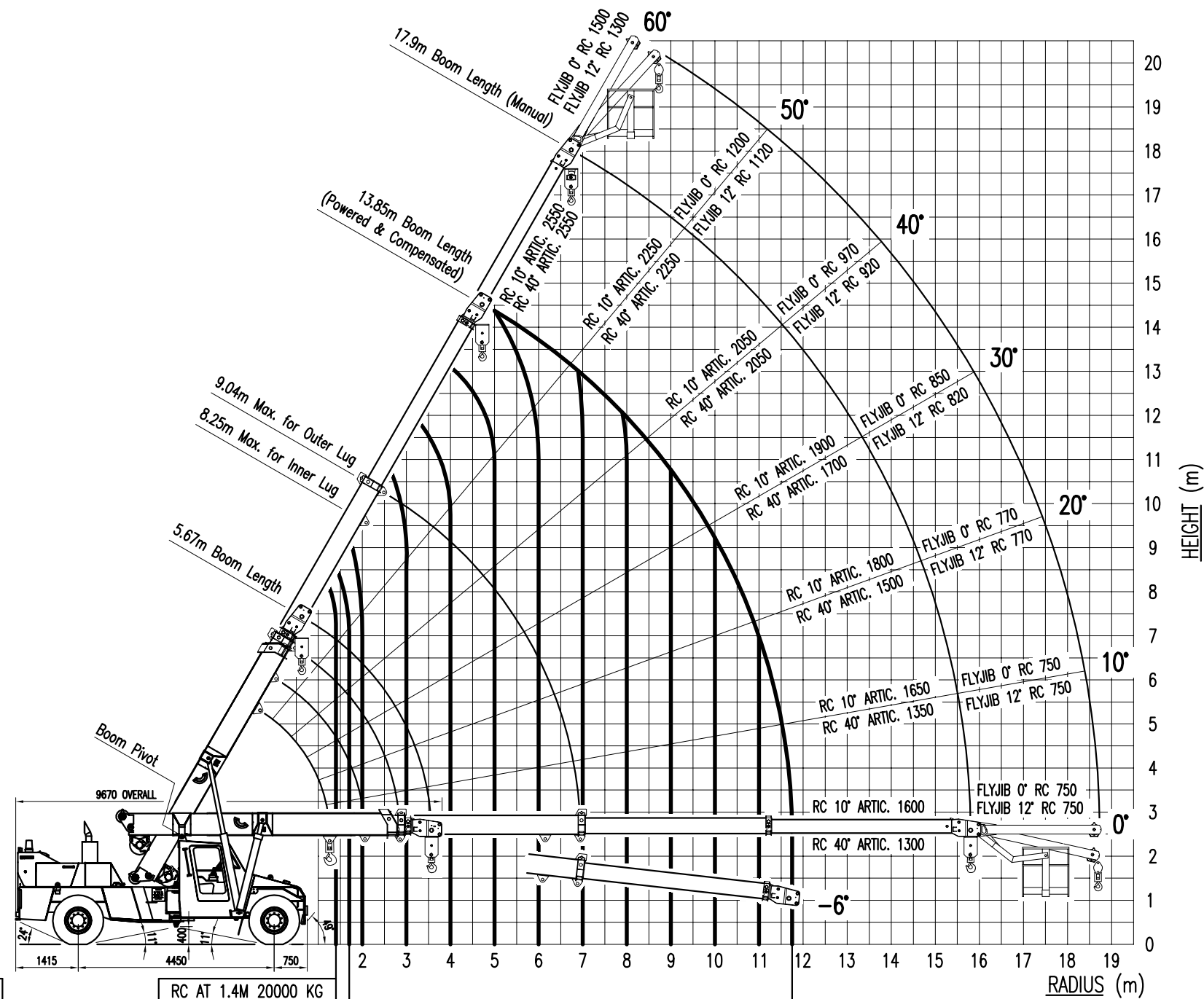
					UNLESS OTHERWISE STATED ALL WELDING TO AS1554 CATEGORY SP AND ALL DIMENSIONS IN (mm) & TOLERENCED TO LIMITS SHOWN.				AS 1100 DO NOT SCALE		DATE	08/10/03
					NOMINAL SIZE	UP TO 150	ABOVE 150 UP TO 300	ABOVE 300 UP TO 1000	ABOVE 1000	DRN		SR
					MACHINING	±0.1	±0.25	±0.5	±1.0	CKD		
					FABRICATION	±0.5	±1.0	±1.5	±2.5	APPD		
REV	CHANGE DETAILS	CHG No.	BY	INTER	DATE	Title				DRG No.		REV
						20 TONNE CRANE WITH OM906 MD3060 D71PL478				16-A-1-220		-

A
B
C
D

A
B
C
D



WINCH RATED CAPACITY (MAX.)	
SINGLE PART	4200 KG
TWO PARTS	8400 KG
THREE PARTS	12600 KG
FOUR PARTS	16800 KG



RC AT 1.4M	20000 KG
RC AT 1.7M	19000KG
RC (KG) 10° ARTIC.	16800 11400 8300 6500 5250 4350 3700 3200 2800 2450 2250
RC (KG) 40° ARTIC.	12600 9950 7200 5600 4500 3750 3150 2700 2350 2050 1850
WINCH RC (KG) 10° ARTIC.	
WINCH RC (KG) 40° ARTIC.	

NOTE : 1. RC'S AT 1.4 & 1.7M RADIUS ARE FOR LUGS ONLY. OTHER RC'S ARE FOR WINCH ONLY. CHECK RATED CAPACITY CHART FOR OTHER LUG VALUES.
 2. RHINO HOOK MAXIMUM RC IS 10000 KG. MANBASKET MAXIMUM RC IS 275 KG.
 3. THIS RADIUS CHART IS A SUMMARY OF RATED CAPACITY MANUAL 16C1320-. REFER TO THE CRANE'S RATED CAPACITY CHART BEFORE ATTEMPTING A LIFT.

UNLESS OTHERWISE STATED ALL WELDING TO AS1554 CATEGORY SP AND ALL DIMENSIONS IN (mm) & TOLERANCED TO LIMITS SHOWN.				AS 1100	DATE	26/10/04
				DO NOT SCALE	DRN	DJF
				SHEET SIZE	CKD	
				SCALE 1:125	APPD	
REV	CHANGE DETAILS	CHG No.	BY	INTER	DATE	
FRANNA CRANES PTY LTD MOBILE CRANE MANUFACTURERS A.C.N. 010 671 048					Title RADIUS LOAD CHART 16T013- AT-20 CRANE	
					DRG No.	16-T-013
					REV	-